

# Test Report

Report No.: JC-RCPC250403

For RoHS Directive 2011/65/EU Annex II & (EU) 2015/863

**Applicant:** SHENZHEN LANA TECHNOLOGY CO., LTD

**Manufacturer:** SHENZHEN LANA TECHNOLOGY CO., LTD

**Name of Sample:** Disposable Electronic Cigarette

**Brand:** ZOOY, OLD SCHOOL, LANAVAPE

**Model:** LN2411

**Date of Issuance:** Jul. 02, 2025

**Skyte Testing Services Guangdong Co., Ltd.**



# Test Report



中国认可  
国际互认  
检测  
TESTING  
CNAS L4549

Report No.: JC-RCPC250403

Report Date: Jul. 02, 2025

Applicant Name: SHENZHEN LANA TECHNOLOGY CO., LTD  
Applicant Add.: 1101, Xinbaoyi Industry And Trade Building, No. 29, The Third Industrial Zone,  
Houting Community, Shajing Street, Bao'An District, Shenzhen  
Manufacturer: SHENZHEN LANA TECHNOLOGY CO., LTD  
Manufacturer Add.: 1101, Xinbaoyi Industry And Trade Building, No. 29, The Third Industrial Zone,  
Houting Community, Shajing Street, Bao'An District, Shenzhen

Test samples were submitted by the applicant, report on the submitted samples said to be:

Sample Name: Disposable Electronic Cigarette  
Brand: ZOOY, OLD SCHOOL, LANAVAPE  
Model: LN2411

Sample Received Date: Jun. 20, 2025  
Testing Period: Jun. 20, 2025 to Jun. 25, 2025

Tests Conducted: As requested by the applicant. See the following pages for details.

Signed for and on behalf of  
Skyte Testing Services Guangdong Co., Ltd.



*Vanessa Huang*

Vanessa Huang / Technical Director  
Approved Signatory

Attention: Please note that every statement made in this report is only valid for the samples tested and reported herein. This report shall not be reproduced except in full, without the written approval of SKYTE. The samples's information was provided by the applicant, SKYTE has no responsibility for the truth of such information.

Skyte Testing Services Guangdong Co., Ltd.  
Add.: 7/F, Bldg 1, Jia'an Hi-Tech Industrial Park,  
1st Liuxian Road, Block 67, Bao'an District, Shenzhen, P.R.C.

Website: www.skyte.com.cn  
Email: service@skyte.com.cn  
Postcode: 518101

Tel: (86-0755) 3323 9933  
Fax: (86-0755) 2672 7113  
Hot Line: 400-6898-200

\*\*\*\*\*

## Test Requirement and Conclusion:

Test Items	Standard	Conclusion
Pb, Cd, Hg, Cr <sup>6+</sup> , DBP, BBP, DEHP, DIBP, PBBs, PBDEs	EU RoHS Directive 2011/65/EU Annex II & (EU) 2015/863	See test results

\*\*\*\*\*

Attention: Please note that every statement made in this report is only valid for the samples tested and reported herein. This report shall not be reproduced except in full, without the written approval of SKYTE. The samples's information was provided by the applicant, SKYTE has no responsibility for the truth of such information.

Skyte Testing Services Guangdong Co., Ltd.  
Add.: 7/F, Bldg 1, Jia'an Hi-Tech Industrial Park,  
1st Liuxian Road, Block 67, Bao'an District, Shenzhen, P.R.C.

Website: [www.skyte.com.cn](http://www.skyte.com.cn)  
Email: [service@skyte.com.cn](mailto:service@skyte.com.cn)  
Postcode: 518101

Tel: (86-0755) 3323 9933  
Fax: (86-0755) 2672 7113  
Hot Line: 400-6898-200

## Test Results

Test Items	Test Component No. & Test Results (mg/kg)			MDL (mg/kg)	Limits <sup>#1</sup> (mg/kg)
	1	(2 ~ 8)*	(9 ~ 12)*		
Cadmium (Cd)	N.D.	N.D.	N.D.	2	100
Lead (Pb)	N.D.	N.D.	N.D.	2	1000
Mercury (Hg)	N.D.	N.D.	N.D.	2	1000
Chromium (VI) (Cr <sup>6+</sup> )	N.D.	N.D.	N.D.	1	1000
Dibutyl phthalate (DBP)	N.D.	N.D.	N.D.	50	1000
Benzyl butyl phthalate (BBP)	N.D.	N.D.	N.D.	50	1000
Diethyl hexyl phthalate (DEHP)	N.D.	N.D.	N.D.	50	1000
Di-iso-butyl ortho-phthalate (DIBP)	N.D.	N.D.	N.D.	50	1000
Sum of Polybrominated Biphenyls (PBBs)	N.D.	N.D.	N.D.	—	1000
Monobromobiphenyl (MonoBB)	N.D.	N.D.	N.D.	5	—
Dibromobiphenyl (DiBB)	N.D.	N.D.	N.D.	5	—
Tribromobiphenyl (TriBB)	N.D.	N.D.	N.D.	5	—
Tetrabromobiphenyl (TetraBB)	N.D.	N.D.	N.D.	5	—
Pentabromobiphenyl (PentaBB)	N.D.	N.D.	N.D.	5	—
Hexabromobiphenyl (HexaBB)	N.D.	N.D.	N.D.	5	—
Heptabromobiphenyl (HeptaBB)	N.D.	N.D.	N.D.	5	—
Octabromobiphenyl (OctaBB)	N.D.	N.D.	N.D.	5	—
Nonabromobiphenyl (NonaBB)	N.D.	N.D.	N.D.	5	—
Decabromobiphenyl (DecaBB)	N.D.	N.D.	N.D.	5	—
Sum of Polybrominated Diphenyl Ethers (PBDEs)	N.D.	N.D.	N.D.	—	1000
Monobromodiphenyl Ether (MonoBDE)	N.D.	N.D.	N.D.	5	—
Dibromodiphenyl Ether (DiBDE)	N.D.	N.D.	N.D.	5	—
Tribromodiphenyl Ether (TriBDE)	N.D.	N.D.	N.D.	5	—
Tetrabromodiphenyl Ether (TetraBDE)	N.D.	N.D.	N.D.	5	—
Pentabromodiphenyl Ether (PentaBDE)	N.D.	N.D.	N.D.	5	—
Hexabromodiphenyl Ether (HexaBDE)	N.D.	N.D.	N.D.	5	—
Heptabromodiphenyl Ether (HeptaBDE)	N.D.	N.D.	N.D.	5	—
Octabromodiphenyl Ether (OctaBDE)	N.D.	N.D.	N.D.	5	—
Nonabromodiphenyl Ether (NonaBDE)	N.D.	N.D.	N.D.	5	—
Decabromodiphenyl Ether (DecaBDE)	N.D.	N.D.	N.D.	5	—

Attention: Please note that every statement made in this report is only valid for the samples tested and reported herein. This report shall not be reproduced except in full, without the written approval of SKYTE. The samples's information was provided by the applicant, SKYTE has no responsibility for the truth of such information.



Test Items	Test Component No. & Test Results (mg/kg)			MDL (mg/kg)	Limits <sup>#1</sup> (mg/kg)
	(13 ~ 19)*	20+26	(21 ~ 25)*		
Cadmium (Cd)	N.D.	N.D.	N.D.	2	100
Lead (Pb)	N.D.	N.D.	N.D.	2	1000
Mercury (Hg)	N.D.	N.D.	N.D.	2	1000
Chromium (VI) (Cr <sup>6+</sup> )	N.D.	N.D.	N.D.	1	1000
Dibutyl phthalate (DBP)	N.D.	N.D.	N.D.	50	1000
Benzyl butyl phthalate (BBP)	N.D.	N.D.	N.D.	50	1000
Diethyl hexyl phthalate (DEHP)	N.D.	N.D.	N.D.	50	1000
Di-iso-butyl ortho-phthalate (DIBP)	N.D.	N.D.	N.D.	50	1000
Sum of Polybrominated Biphenyls (PBBs)	N.D.	N.D.	N.D.	—	1000
Monobromobiphenyl (MonoBB)	N.D.	N.D.	N.D.	5	—
Dibromobiphenyl (DiBB)	N.D.	N.D.	N.D.	5	—
Tribromobiphenyl (TriBB)	N.D.	N.D.	N.D.	5	—
Tetrabromobiphenyl (TetraBB)	N.D.	N.D.	N.D.	5	—
Pentabromobiphenyl (PentaBB)	N.D.	N.D.	N.D.	5	—
Hexabromobiphenyl (HexaBB)	N.D.	N.D.	N.D.	5	—
Heptabromobiphenyl (HeptaBB)	N.D.	N.D.	N.D.	5	—
Octabromobiphenyl (OctaBB)	N.D.	N.D.	N.D.	5	—
Nonabromobiphenyl (NonaBB)	N.D.	N.D.	N.D.	5	—
Decabromobiphenyl (DecaBB)	N.D.	N.D.	N.D.	5	—
Sum of Polybrominated Diphenyl Ethers (PBDEs)	N.D.	N.D.	N.D.	—	1000
Monobromodiphenyl Ether (MonoBDE)	N.D.	N.D.	N.D.	5	—
Dibromodiphenyl Ether (DiBDE)	N.D.	N.D.	N.D.	5	—
Tribromodiphenyl Ether (TriBDE)	N.D.	N.D.	N.D.	5	—
Tetrabromodiphenyl Ether (TetraBDE)	N.D.	N.D.	N.D.	5	—
Pentabromodiphenyl Ether (PentaBDE)	N.D.	N.D.	N.D.	5	—
Hexabromodiphenyl Ether (HexaBDE)	N.D.	N.D.	N.D.	5	—
Heptabromodiphenyl Ether (HeptaBDE)	N.D.	N.D.	N.D.	5	—
Octabromodiphenyl Ether (OctaBDE)	N.D.	N.D.	N.D.	5	—
Nonabromodiphenyl Ether (NonaBDE)	N.D.	N.D.	N.D.	5	—
Decabromodiphenyl Ether (DecaBDE)	N.D.	N.D.	N.D.	5	—

Attention: Please note that every statement made in this report is only valid for the samples tested and reported herein. This report shall not be reproduced except in full, without the written approval of SKYTE. The samples's information was provided by the applicant, SKYTE has no responsibility for the truth of such information.

Test Items	Test Component No. & Test Results (mg/kg)			MDL (mg/kg)	Limits <sup>#1</sup> (mg/kg)
	(27 ~ 31)*	32	33		
Cadmium (Cd)	N.D.	N.D.	N.D.	2	100
Lead (Pb)	21	12	4	2	1000
Mercury (Hg)	N.D.	N.D.	N.D.	2	1000
Chromium (VI) (Cr <sup>6+</sup> )	N.D.	N.D.	N.D.	1	1000
Dibutyl phthalate (DBP)	N.D.	N.D.	N.D.	50	1000
Benzyl butyl phthalate (BBP)	N.D.	N.D.	N.D.	50	1000
Diethyl hexyl phthalate (DEHP)	N.D.	N.D.	N.D.	50	1000
Di-iso-butyl ortho-phthalate (DIBP)	N.D.	N.D.	N.D.	50	1000
Sum of Polybrominated Biphenyls (PBBs)	N.D.	N.D.	N.D.	—	1000
Monobromobiphenyl (MonoBB)	N.D.	N.D.	N.D.	5	—
Dibromobiphenyl (DiBB)	N.D.	N.D.	N.D.	5	—
Tribromobiphenyl (TriBB)	N.D.	N.D.	N.D.	5	—
Tetrabromobiphenyl (TetraBB)	N.D.	N.D.	N.D.	5	—
Pentabromobiphenyl (PentaBB)	N.D.	N.D.	N.D.	5	—
Hexabromobiphenyl (HexaBB)	N.D.	N.D.	N.D.	5	—
Heptabromobiphenyl (HeptaBB)	N.D.	N.D.	N.D.	5	—
Octabromobiphenyl (OctaBB)	N.D.	N.D.	N.D.	5	—
Nonabromobiphenyl (NonaBB)	N.D.	N.D.	N.D.	5	—
Decabromobiphenyl (DecaBB)	N.D.	N.D.	N.D.	5	—
Sum of Polybrominated Diphenyl Ethers (PBDEs)	N.D.	N.D.	N.D.	—	1000
Monobromodiphenyl Ether (MonoBDE)	N.D.	N.D.	N.D.	5	—
Dibromodiphenyl Ether (DiBDE)	N.D.	N.D.	N.D.	5	—
Tribromodiphenyl Ether (TriBDE)	N.D.	N.D.	N.D.	5	—
Tetrabromodiphenyl Ether (TetraBDE)	N.D.	N.D.	N.D.	5	—
Pentabromodiphenyl Ether (PentaBDE)	N.D.	N.D.	N.D.	5	—
Hexabromodiphenyl Ether (HexaBDE)	N.D.	N.D.	N.D.	5	—
Heptabromodiphenyl Ether (HeptaBDE)	N.D.	N.D.	N.D.	5	—
Octabromodiphenyl Ether (OctaBDE)	N.D.	N.D.	N.D.	5	—
Nonabromodiphenyl Ether (NonaBDE)	N.D.	N.D.	N.D.	5	—
Decabromodiphenyl Ether (DecaBDE)	N.D.	N.D.	N.D.	5	—

Attention: Please note that every statement made in this report is only valid for the samples tested and reported herein. This report shall not be reproduced except in full, without the written approval of SKYTE. The samples's information was provided by the applicant, SKYTE has no responsibility for the truth of such information.

Test Items	Test Component No. & Test Results				MDL	Limits	Unit
	34	35	36	37			
Cadmium (Cd)	10	N.D.	11	N.D.	2	100	mg/kg
Lead (Pb)	102	16	53	N.D.	2	1000	mg/kg
Mercury (Hg)	N.D.	N.D.	N.D.	N.D.	2	1000	mg/kg
Chromium (VI) (Cr <sup>6+</sup> )	Negative <sup>#2</sup>	Negative <sup>#2</sup>	Negative <sup>#2</sup>	Negative <sup>#2</sup>	0.10	1000	μg/cm <sup>2</sup>

Test Items	Test Component No. & Test Results				MDL	Limits	Unit
	38	39	40	41			
Cadmium (Cd)	N.D.	25	N.D.	N.D.	2	100	mg/kg
Lead (Pb)	186	N.D.	22	N.D.	2	1000	mg/kg
Mercury (Hg)	N.D.	N.D.	N.D.	N.D.	2	1000	mg/kg
Chromium (VI) (Cr <sup>6+</sup> )	Negative <sup>#2</sup>	Negative <sup>#2</sup>	Negative <sup>#2</sup>	Negative <sup>#2</sup>	0.10	1000	μg/cm <sup>2</sup>

Tested by: Chen Dianshu, Chen Junlong, Cai Yuqing

Checked by: Huang Xiangwei, Zheng Caiju

## Remarks:

- (1) mg/kg = milligram per kilogram
- (2) μg/cm<sup>2</sup> = micrograms per square centimeter
- (3) MDL = method detection limit
- (4) N.D. = not detected, less than MDL
- (5) \* = As per the applicant's request, the mixed test was conducted.
- (6) #1 = The limit for the test result is 1/n of the value in column (where "n" is the number of mixed samples).
- (7) #2 = A Negative result indicates no Cr<sup>6+</sup> detected, a Positive result indicates the presence of Cr<sup>6+</sup>.

## Test Component Descriptions:

1. Colored and green-pink gradient coated plastic (shell)
2. Black plastic (bracket)
3. Black transparent plastic (display bracket)
4. Grey transparent plastic (mouthpiece)
5. White plastic (exhaust extension)
6. White plastic (heating coil base)
7. Transparent plastic
8. Transparent plastic (e-liquid storage tube)
9. White soft silicone (mouthpiece plug)
10. White soft silicone (upper rubber stopper)

Attention: Please note that every statement made in this report is only valid for the samples tested and reported herein. This report shall not be reproduced except in full, without the written approval of SKYTE. The samples's information was provided by the applicant, SKYTE has no responsibility for the truth of such information.



11. White soft silicone (bottom rubber stopper)
12. White soft silicone (e-liquid plug)
13. White cotton (e-liquid storage cotton)
14. White cotton (e-liquid guide cotton)
15. White cotton (e-liquid absorption cotton)
16. White cotton (mouthpiece cotton)
17. White cotton
18. White cotton with viscose
19. White plastic (fiberglass tube)
20. Black mesh plastic with viscose
21. Green gasket with viscose (battery site)
22. Red gasket with viscose (battery site)
23. Red mucosa with viscose (battery site)
24. Yellow mucosa with viscose (battery site)
25. Black mucosa with viscose (battery site)
26. White and black plastic (display screen patch)
27. Red plastic (wire sheath)
28. Black plastic (wire sheath)
29. Blue plastic (wire sheath)
30. White plastic (wire sheath)
31. Yellow plastic (wire sheath)
32. Circuit board with various components (PCB)
33. Grey plastic with silvery metal (USB)
34. Silvery metal (heating coil)
35. Silvery metal (electric wire)
36. Silvery metal (heating coil bracket)
37. Silvery metal (USB)
38. Silvery metal
39. Silvery metal (e-cigarette controller)
40. Golden metal (electrode)
41. Silvery metal (battery contact)

Attention: Please note that every statement made in this report is only valid for the samples tested and reported herein. This report shall not be reproduced except in full, without the written approval of SKYTE. The samples's information was provided by the applicant, SKYTE has no responsibility for the truth of such information.

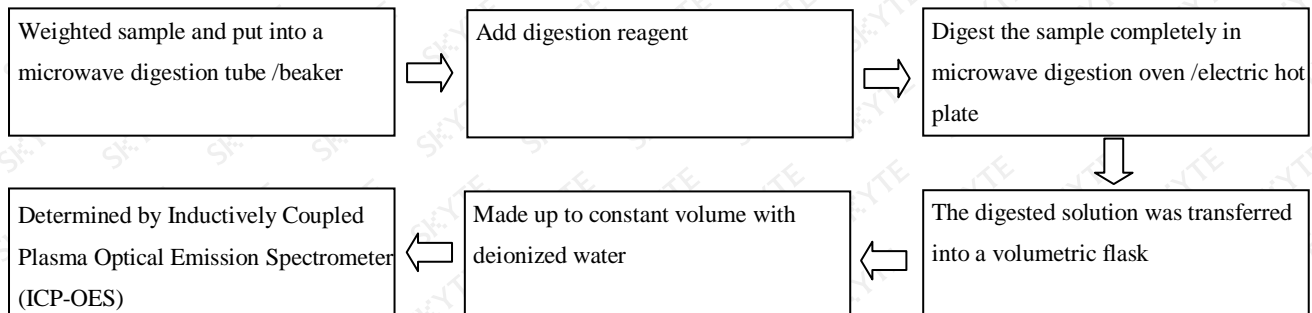


## Test Methods

Test Items	Test Methods	Test Instruments
Cd, Pb	IEC 62321-5:2013	ICP-OES
Hg	IEC 62321-4:2013+AMD 1:2017 CSV	ICP-OES
Cr <sup>6+</sup>	IEC 62321-7-1:2015 / IEC 62321-7-2:2017	UV-Vis
PBBs, PBDEs	IEC 62321-6:2015	GC-MS
DBP, BBP, DEHP, DIBP	IEC 62321-8:2017	GC-MS

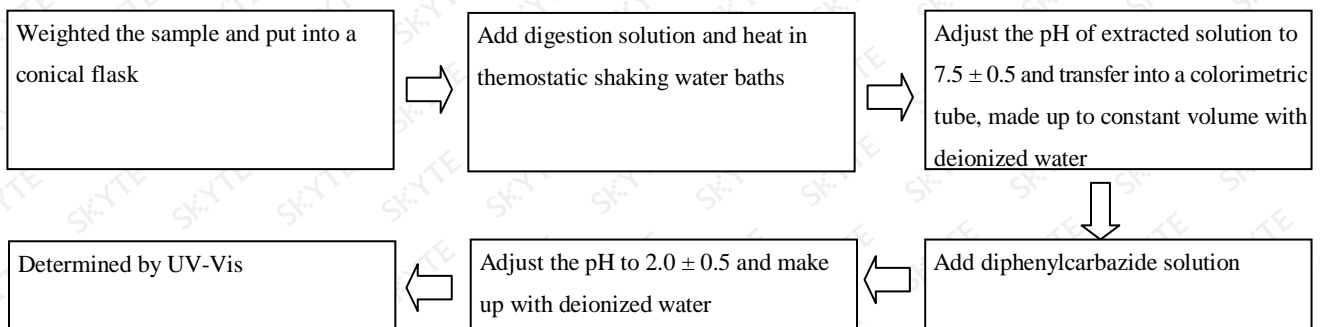
## Test Flowchart

### 1. Test for Cd / Pb / Hg contents



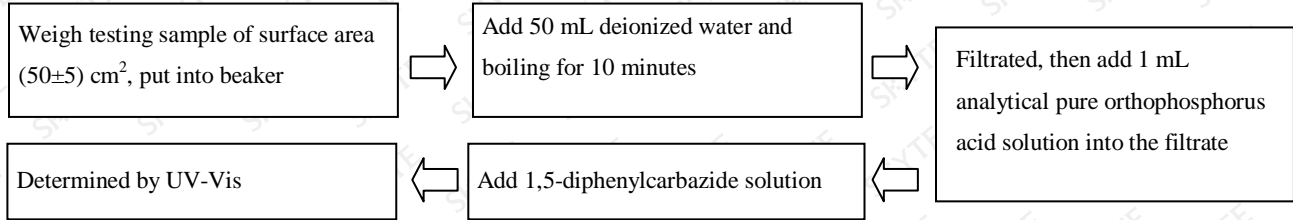
### 2. Test for Cr<sup>6+</sup> content

#### 2.1 Determination of Cr<sup>6+</sup> in polymers and electronics by the colorimetric method

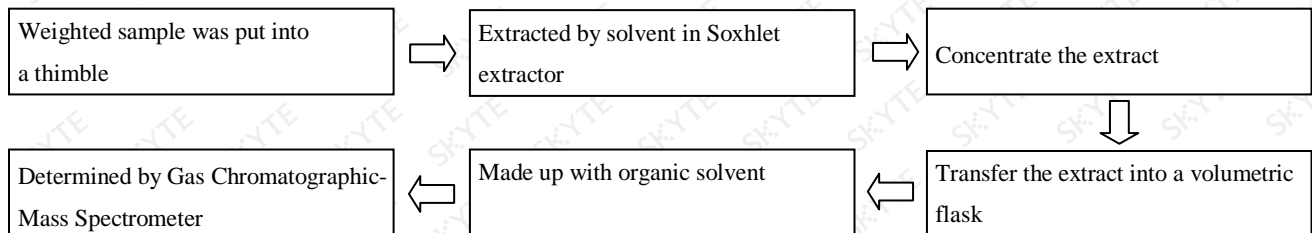


Attention: Please note that every statement made in this report is only valid for the samples tested and reported herein. This report shall not be reproduced except in full, without the written approval of SKYTE. The samples's information was provided by the applicant, SKYTE has no responsibility for the truth of such information.

## 2.2 Determination of $\text{Cr}^{6+}$ in colourless and coloured corrosion-protected coatings on metals by the colorimetric method



## 3. Test for PBBs / PBDEs, DBP, BBP, DEHP, DIBP contents



Attention: Please note that every statement made in this report is only valid for the samples tested and reported herein. This report shall not be reproduced except in full, without the written approval of SKYTE. The samples's information was provided by the applicant, SKYTE has no responsibility for the truth of such information.

## Sample Photos



Test Component No.1: Colored and green-pink gradient coated plastic (shell)

Test Component No.2: Black plastic (bracket)

Test Component No.3: Black transparent plastic (display bracket)

Test Component No.4: Grey transparent plastic (mouthpiece)

Test Component No.5: White plastic (exhaust extension)

Test Component No.9: White soft silicone (mouthpiece plug)

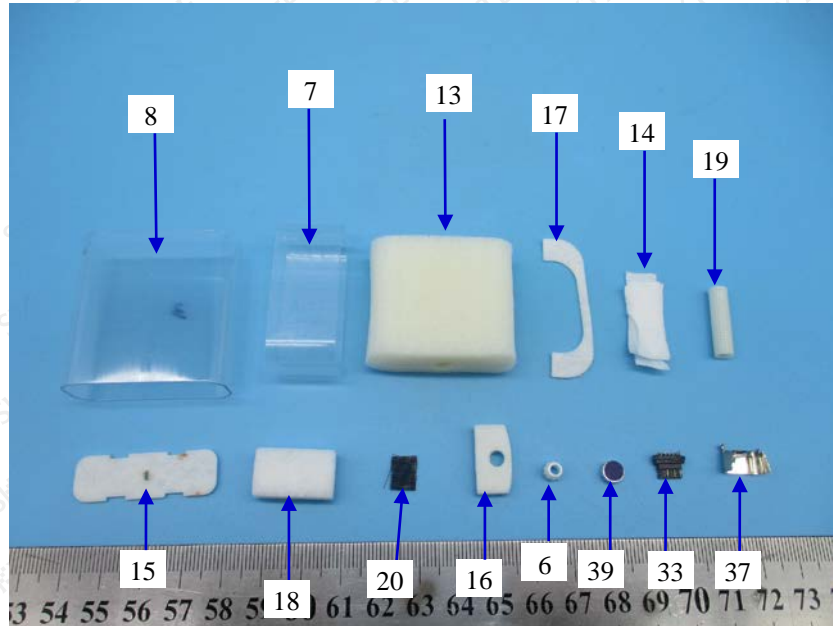
Test Component No.10: White soft silicone (upper rubber stopper)

Test Component No.11: White soft silicone (bottom rubber stopper)

Test Component No.12: White soft silicone (e-liquid plug)

Test Component No.26: White and black plastic (display screen patch)

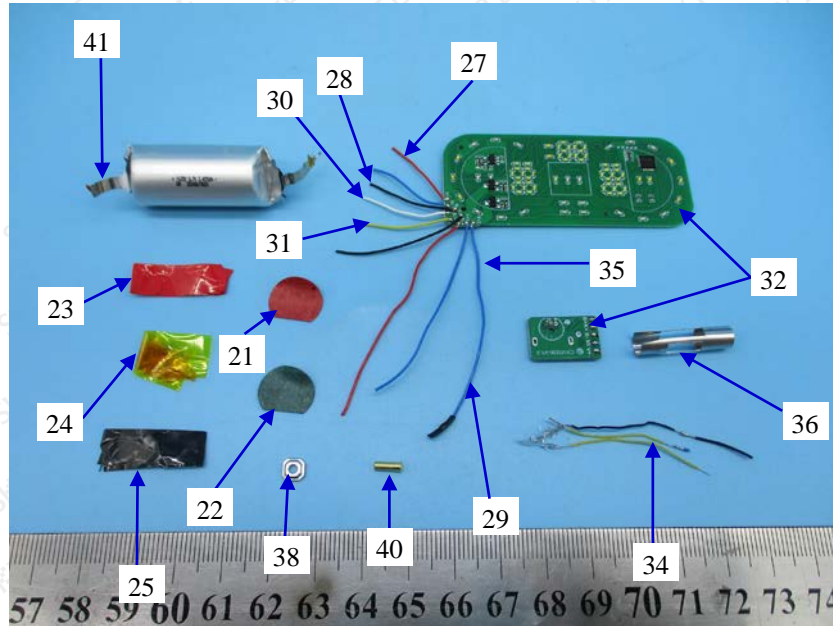
Attention: Please note that every statement made in this report is only valid for the samples tested and reported herein. This report shall not be reproduced except in full, without the written approval of SKYTE. The samples's information was provided by the applicant, SKYTE has no responsibility for the truth of such information.



- Test Component No.6: White plastic (heating coil base)
- Test Component No.7: Transparent plastic
- Test Component No.8: Transparent plastic (e-liquid storage tube)
- Test Component No.13: White cotton (e-liquid storage cotton)
- Test Component No.14: White cotton (e-liquid guide cotton)
- Test Component No.15: White cotton (e-liquid absorption cotton)
- Test Component No.16: White cotton (mouthpiece cotton)
- Test Component No.17: White cotton
- Test Component No.18: White cotton with viscose
- Test Component No.19: White plastic (fiberglass tube)
- Test Component No.20: Black mesh plastic with viscose
- Test Component No.33: Grey plastic with silvery metal (USB)
- Test Component No.37: Silvery metal (USB)
- Test Component No.39: Silvery metal (e-cigarette controller)

Attention: Please note that every statement made in this report is only valid for the samples tested and reported herein. This report shall not be reproduced except in full, without the written approval of SKYTE. The samples's information was provided by the applicant, SKYTE has no responsibility for the truth of such information.





- Test Component No.21: Green gasket with viscose (battery site)
- Test Component No.22: Red gasket with viscose (battery site)
- Test Component No.23: Red mucosa with viscose (battery site)
- Test Component No.24: Yellow mucosa with viscose (battery site)
- Test Component No.25: Black mucosa with viscose (battery site)
- Test Component No.27: Red plastic (wire sheath)
- Test Component No.28: Black plastic (wire sheath)
- Test Component No.29: Blue plastic (wire sheath)
- Test Component No.30: White plastic (wire sheath)
- Test Component No.31: Yellow plastic (wire sheath)
- Test Component No.32: Circuit board with various components (PCB)
- Test Component No.34: Silvery metal (heating coil)
- Test Component No.35: Silvery metal (electric wire)
- Test Component No.36: Silvery metal (heating coil bracket)
- Test Component No.38: Silvery metal
- Test Component No.40: Golden metal (electrode)
- Test Component No.41: Silvery metal (battery contact)

Attention: Please note that every statement made in this report is only valid for the samples tested and reported herein. This report shall not be reproduced except in full, without the written approval of SKYTE. The samples's information was provided by the applicant, SKYTE has no responsibility for the truth of such information.



**Finished Product**

(End of report)

Attention: Please note that every statement made in this report is only valid for the samples tested and reported herein. This report shall not be reproduced except in full, without the written approval of SKYTE. The samples's information was provided by the applicant, SKYTE has no responsibility for the truth of such information.

Skyte Testing Services Guangdong Co., Ltd.  
Add.: 7/F, Bldg 1, Jia'an Hi-Tech Industrial Park,  
1st Liuxian Road, Block 67, Bao'an District, Shenzhen, P.R.C.

Website: [www.skyte.com.cn](http://www.skyte.com.cn)  
Email: [service@skyte.com.cn](mailto:service@skyte.com.cn)  
Postcode: 518101

Tel: (86-0755) 3323 9933  
Fax: (86-0755) 2672 7113  
Hot Line: 400-6898-200